

Viewpoint to Sightline Express Upgrade

Seamlessly migrate your legacy Viewpoint project data into Sightline while upgrading your eDiscovery experience

- ▶ Migrate your Viewpoint project data to Sightline's best-in-class eDiscovery platform at no-cost with six-months of hosting offered at no charge
- ▶ Achieve immediate productivity with on-demand workspace provisioning, drag-and-drop data processing, review, and productions
- ▶ Customize and control workflows and workspaces based on your specific needs
- ▶ Leverage the top rated-solution amongst all eDiscovery platforms for Quality of Support¹



Sightline

Sightline is a fully-featured, secure end-to-end eDiscovery solution, allowing case teams to cull more, prioritize better and review faster at a lower, more predictable cost.

Seamlessly migrate your legacy Viewpoint project data to a proven, fully-supported platform designed to power your entire eDiscovery workflow by the global leader in eDiscovery. Viewpoint to Sightline Express Upgrade is a custom-engineered solution, leveraging our deep experience in hosting and managing Viewpoint. The program guides you through a structured, well-managed project migration into Sightline while eliminating unforeseen risks and costs associated with corrupt or lost project data.

Fully Managed Process

With proven expertise enabling complex, global data migrations and transfers, Consilio has invested heavily in the Viewpoint to Sightline solution - from developing complete internal playbooks, to training and staffing Data Operations supporting teams, to activating our global team to deliver a successful migration around the clock.

After a thorough consultation with you to understand the specifics of your projects, an expert Project Manager will provide detailed reporting of each project in the Viewpoint environment to be migrated. We will work through a structured classification process to determine each project to migrate, archive, or delete, as well as identify which ones are priority or sensitive in nature for special handling.

From there, your Consilio team will provide a detailed, projected timeline and regular status updates throughout the migration. To ensure adequate computing resources, Consilio has provisioned significant network, compute, and storage assets to enable a successful mass migration.

Sightline Features not available in Viewpoint

- Simple Drag-and-Drop self-upload and processing UI to get data into Sightline
- Real time processing progress status
- Processing Summary & Exception Reports
- Automated User Lost Password Reset
- 100% Web-based interface; no RDP
- Reviewer time tracking
- View, print or produce translated documents
- In-document reviewer remarks
- Redactions applied without TIFFing
- Embedded contextual help within UI
- SightlineCentral "How To" snippet videos
- Bulk Action reminders to consider email threads and textual near dupes
- Production PrivGuard leverages analytics
- Searchable PDF creation during ingestion
- Production quality checks prior to deliverable generation
- Share a production link with counsel
- Warnings for potential bad search syntax
- Automatic saved search scheduling
- Sharing saved searches
- Communications Pattern Visualization
- Timeline & Gaps Visualization
- Pivot/Tally Visualizations
- Export Data utility
- Sweeps to push docs to next review stage
- Support for Slack, Teams, Jira other chats



Global Leader in Legal Consulting and Services
consilio.com

¹G2.com Spring 2021 Market Report for eDiscovery Platforms - Sightline rated #1 for Quality of Support



DISCOVER THE
Consilio Complete
EXPERIENCE

Complete Data

Complete Connector

Complete Review

Complete Intelligence

Complete Media

Complete Enterprise

Complete Security

Complete Flex

Learn more at:
consilio.com/complete

Automation to Facilitate Complete Data Migration

To facilitate a rapid and comprehensive data migration, Consilio Data Operations and Engineering teams have developed and pressure-tested automation applications specific to Viewpoint. Over 60 standard Viewpoint metadata fields are scripted to export into a formatted output that is loaded directly into Sightline – eliminating potential data corruption. Additionally, Viewpoint View groupings, structure, and document associations are scripted to a structured SQL export that is automatically parsed by Sightline, with equivalent folder grouping, organization, and document association structures.

Project-Specific Data Migration

Viewpoint project custom objects - Tags, Comment Fields, Redaction Tags, and custom Metadata fields – are exported in a structured format that is parsed and mirrored within Sightline. Consilio admins also tailor coding forms within Sightline and assist with user permissions and any Assignment Batches needed.

Project Management and People you Already Trust

Ensuring we deliver a consistent, familiar experience, especially during a data migration, is our top priority. XDD Project Managers that you trust on your projects have now been cross-trained in Sightline and have earned their Sightline Certified Administrator credentials. No new expectations to set and adjust. No new communication styles or names to remember. This provides an extra layer of assurance and communication during the migration period and beyond.

No Cost to You -- Plus Six Months Free Hosting

To ease the burden from the challenges caused by Conduent's announcement, we are offering the Viewpoint to Sightline Express Upgrade at no cost to our XDD Viewpoint clients. To further show our support to our clients, we include six months of post-migration hosting at no additional charge.

Preview Your Own Data and Tour the Sightline Platform

By the Numbers

15+

Data Centers
Around the World

30+

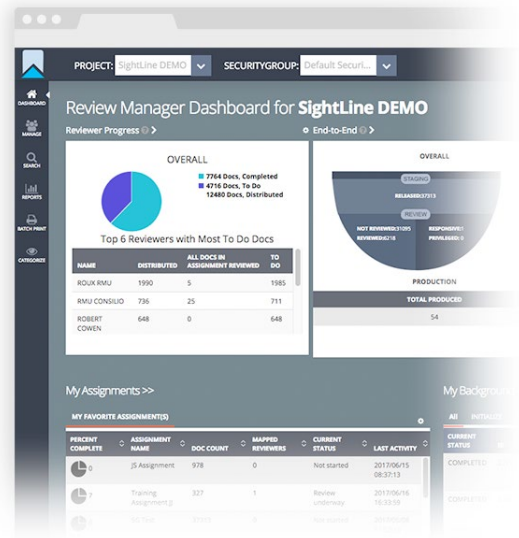
Matters Currently
Hosted Globally

100+

Dedicated Software and
Database Engineering and
QA Team for Patented and
Patent-pending Solutions
Development



Demonstrations of Sightline migrations using a sample of your own data are available upon request. We encourage you to discover how migration will improve your discovery process, and we welcome you to the next generation in self-service through Sightline.



Ready to Learn More?
Visit consilio.com or email info@consilio.com